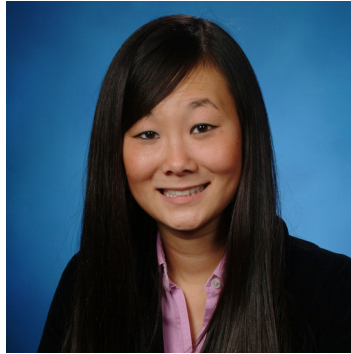


YUMI PRATER

ADVISOR



O 317.663.6549

F 317.663.6554

yprater@rcre.com

PROFESSIONAL EXPERIENCE

Specializing in tenant advisory services, strategic planning, and portfolio management, Yumi distinguishes herself by establishing individual relationships with her clients. Coupling local market intelligence with her client's needs and goals, she aligns her clientele with real estate solutions that support their business objectives.

Yumi's approach is more strategic than merely transactional in that she makes sure to understand her client's business today, tomorrow, and what it will likely be in years to come. In doing so, she creates a strategy that is proactive in dealing with real estate matters resulting in greater profitability and productivity. Passionate about the success of her clients, Yumi's business model is simple; provide clients a superior level of services as if they were her only client.

Prior to joining Resource Commercial Real Estate, Yumi worked with the Tenant Representation Services Group in both the Chicago and Indianapolis offices of CB Richard Ellis.

EDUCATION

Indiana University, Bloomington - B.A. Psychology and Sociology

PROFESSIONAL SPECIALIZATIONS

- Tenant/Buyer Representation
- Corporate Real Estate
 - Consulting
 - Strategic Planning
 - Portfolio Management Services

YUMI PRATER

ADVISOR

PROFESSIONAL AFFILIATIONS

- ICBR (Indiana Commercial Board of REALTORS[®]), Member
- ICBR Sponsorship Committee, Member
- Licensed Indiana Real Estate Salesperson
- Licensed Illinois Real Estate Salesperson

SIGNIFICANT ASSIGNMENTS

- Lauth Property Group – 100,000 SF
- Indiana Tech – 52,000 SF
- nFrame – 52,000 SF
- DePaul University – 40,000 SF
- Angiotech Pharmaceuticals – 31,000 SF
- Health Care Excel – 30,000 SF
- Prophet Brand Consulting – 23,000 SF
- All American Direct – 18,000 SF
- Keyence Corporation – 14,000 SF
- Miller and Company – 14,000 SF
- Boelter Associates – 13,000 SF
- Universal Hospital Services (UHS) – 10,000 SF
- American Messaging Services, LLC – 8,000 SF
- ENthEnergy – 6,000 SF
- CDC – 5,000 SF
- Harrison College – 4,000 SF

CLIENTS REPRESENTED

- American Messaging Services, LLC
- The Anson Group
- DLZ
- EMH&T
- Lemko Corporation
- Prophet Brand Consulting
- Illinois School Choice
- EMI Music Marketing
- McCloud Services
- Logic Key
- Business Insurance and Commerce
- Print Soft Americas
- Safety-Kleen